

D-SILTER

The M-I SWACO D-SILTER* has proven to be an extremely effective, economical tool for removing virtually all silt particles larger than 25 microns from drilling fluids. The D-SILTER unit is offered in a variety of compact, skid-mounted configurations.*

Features

Cost efficient. The M-I SWACO D-SILTER provides highly efficient removal of silt particles larger than 25 microns, some as small as 15 microns.

High performance. The D-SILTER unit provides a range of capacities from 600 to 1,500 GPM (2,271.2 to 5,678.1 L/min).

Innovative design. The exclusive twin-clone design consists of two, 4-in. (101.6-mm) sturdy polyurethane cyclones mounted as a single unit. This feature results in a 40 to 50% greater capacity than other comparable 4-in. (101.6-mm) cyclones.

The unit also features a unique 20° taper angle compared to the typical 15° taper of most other units, resulting in a much lower percentage of mud lost to underflow.

Rugged. Sturdy polyurethane clones provide long in-service life.

Increases drilling rates. By removing silt particles to 25 microns, the D-SILTER unit effectively reduces mud weight in the system, thus increasing effective drilling rates.

Reducing the solids content of the drilling fluid decreases the filter cake, minimizing the chance of stuck pipe.

Minimizes downtime. The exclusive M-I SWACO twin-clone design allows easy changeout and minimizes downtime due to wear on pumps and downstream processing equipment.



Features

- Exclusive twin-clone design results in 40 to 50% greater capacity
- A variety of compact, skid-mounted configurations
- Unique 20° taper angle resulting in a much lower percentage of mud lost to underflow
- Sturdy polyurethane clones provide long in-service life

Benefits

- Efficient and effective removal of virtually all silt particles larger than 25 microns
- Reduces mud weight, increasing effective drilling rates
- Minimizes stuck-pipe incidents
- Reduces maintenance and downtime



Customer-focused, solutions-driven

Twin Clones Provide 40 to 50% Greater Capacity

The M-I SWACO D-SILTER features the exclusive twin-clone design, providing two 4-in. (101.6-mm) polyurethane cyclones per outlet, resulting in 40 to 50% more processing capacity with less fluid loss than comparable single-unit 4-in. (101.6-mm) clones.

The clones, made of sturdy polyurethane for long in-service life, feature a unique 20° taper angle (compared to the 15° taper angle on most other units) that minimizes fluid loss.

The M-I SWACO D-SILTER is an integral part of our line of high-performance mud cleaners. When combined with an M-I SWACO high-performance shale shaker, the D-SILTER helps to control drilled solids and retain barite.

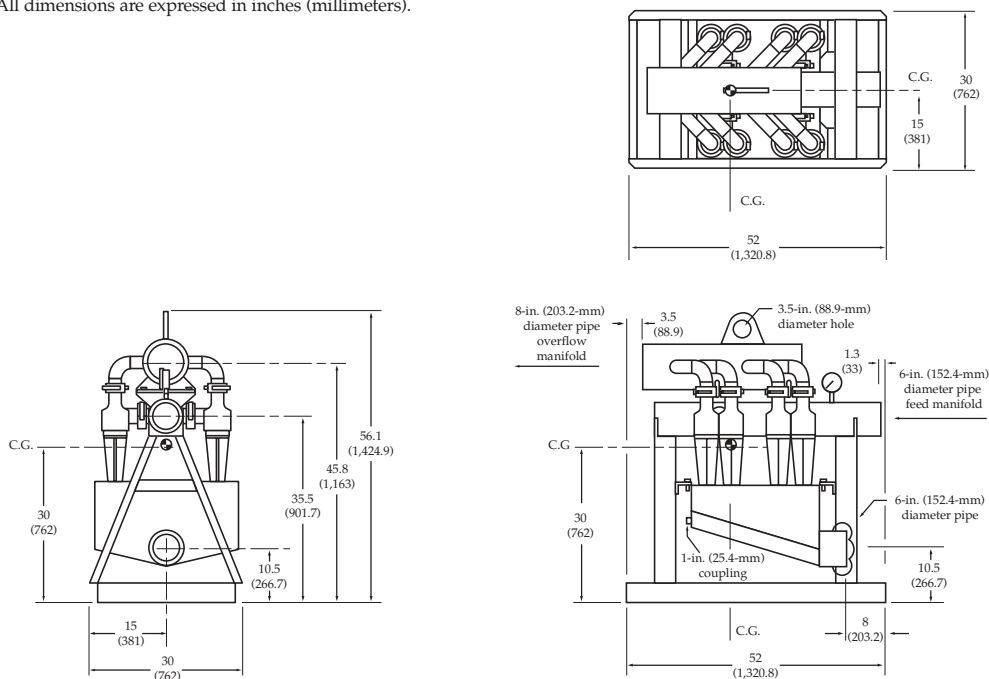


Specifications

Model	Number of Clones	Length in. (mm)	Width in. (mm)	Height in. (mm)	Weight lb (kg)	Capacity gpm (L/min)
4T4	8	52 (1,320.8)	30 (762)	56.1 (1,424.9)	680 (308.4)	600 (2,271.2)
6T4	12	66 (1,676.4)	30 (762)	56.1 (1,424.9)	800 (362.9)	900 (3,406.9)
8T4	16	80.3 (2,039.6)	30 (762)	56.1 (1,424.9)	925 (419.6)	1,200 (4,542.5)
10T4	20	94.5 (2,400.3)	32 (812.8)	60.3 (1,531.6)	1,150 (521.6)	1,500 (5,678.1)

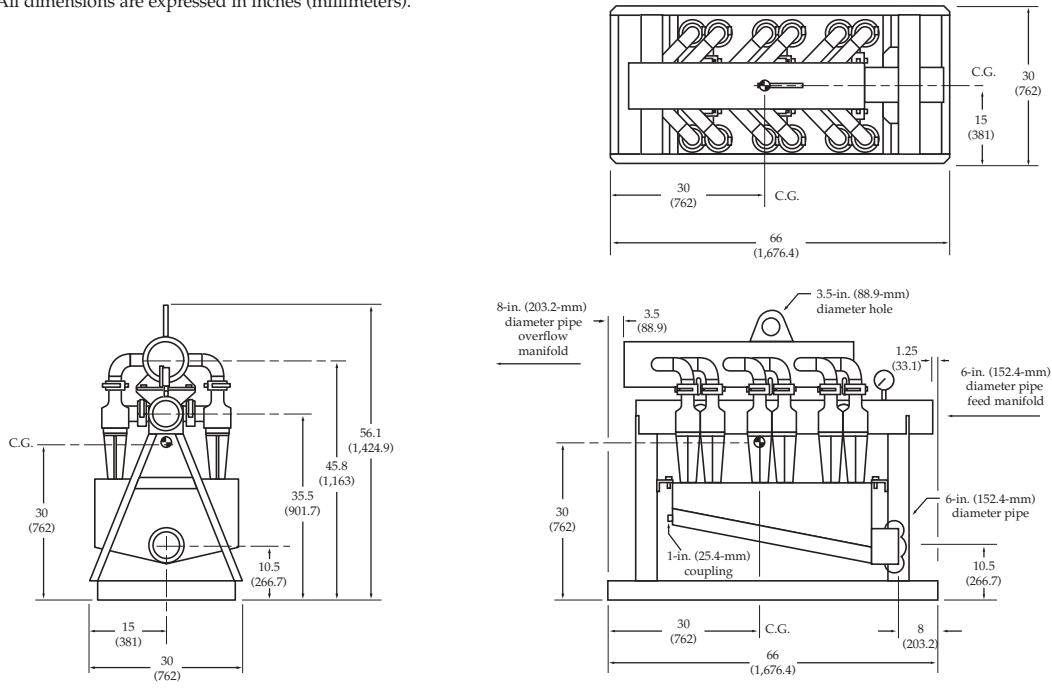
Engineering Drawing: 4T4 D-SILTER

All dimensions are expressed in inches (millimeters).



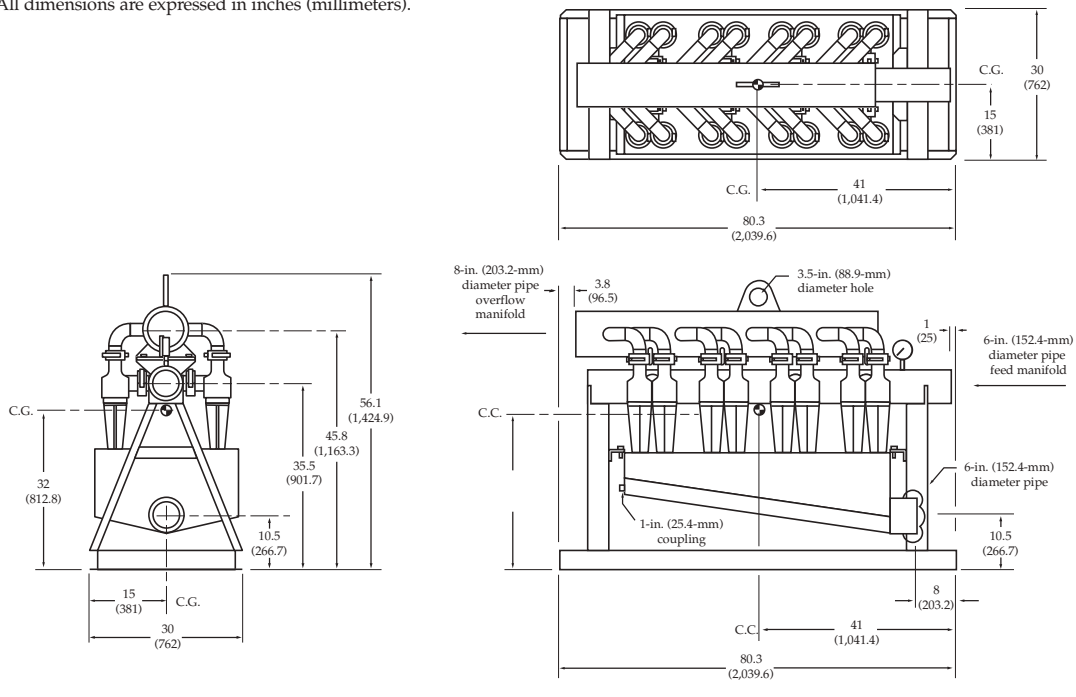
Engineering Drawing: 6T4 D-SILTER

All dimensions are expressed in inches (millimeters).



Engineering Drawing: 8T4 D-SILTER

All dimensions are expressed in inches (millimeters).



This information is supplied solely for informational purposes and M-I SWACO makes no guarantees or warranties, either expressed or implied, with respect to the accuracy and use of this data. All product warranties and guarantees shall be governed by the Standard Terms of Sale.

©1998 M-I LLC. All rights reserved.
*Mark of M-I LLC.
MS-04289 11/04 Litho in U.S.A.



P.O. Box 42842
Houston, Texas 77242-2842
Tel: 281-988-1866
1-800-654-0660
Fax: 281-988-1888

www.miswaco.com
E-mail: questions@miswaco.com